



AEIOU Foundation and Chain Reaction Women's 300



Together, we are changing the lives of
children with autism



Chain Reaction Women's 300, helping AEIOU create brighter futures for children with autism

The compelling need for support

AEIOU Foundation has emerged as a leading provider of evidence-based early intervention for children with autism who are aged between two and six years. Our program is tailored to meet the individual needs of children with moderate to severe autism, and teaches them essential life skills in the areas of communication, socialisation, cognitive development and independence. Families also receive regular training and support enabling them to continue therapy in their home and community.

Since 2005, we have established eight AEIOU centres in Queensland; Bray Park, Camira, Nathan, Gold Coast, Sunshine Coast, Toowoomba, Bundaberg and Townsville. We will open a new centre in Logan in August 2018. AEIOU supports the largest cohort of children with autism in this age group in Queensland.

One in 100 people in Australia will receive an autism diagnosis, making it one of the most common childhood disabilities. AEIOU's evidenced-based early intervention program is one of the most effective and affordable programs in Australia. Our priority is to equip children with the tools and skills for school, employment and beyond, completely transforming the course of their lives. Our core focus is to ensure every child, irrespective of social or financial circumstances, has access to our life changing therapy support.



What is autism?

A **lifelong** neurological developmental disorder



1 in 100 Australians diagnosed with autism



Autism affects **4 boys** to every **1 girl**



There is **no cause** and **no cure**



Autism Spectrum Disorder (ASD)

includes Autism, Asperger's Syndrome & Pervasive Developmental Disorder Not Otherwise Specified (PDD-NOS)



ASD is **characterised by difficulties** in 2 main areas:

- Social communication & interaction
- Restricted repetitive patterns of behaviour, interests or activities



The AEIOU Program

The curriculum provides a framework for **teaching every child functional skills which facilitate independence and inclusion**



Includes 20 hours of therapy per week,

as recommended in a report by Roberts, Williams, Smith & Campbell (2015), released by the NDIA in February 2016



Is individualised, with each child's goals considered in conjunction with parents and carers



Is delivered in a naturalistic environment, similar to that of childcare and kindergarten



Is family centred

and provides parents and caregivers with skills, knowledge and supports to enhance their child's development in the home and community setting



Has a high staff to child ratio



How Chain Reaction Women's 300 will change lives

Accessing early intervention should be a right for all families and not a privilege. Every child who attends an AEIOU centre has the opportunity to reach their full potential, accomplishing milestones many other families may take for granted. The simple ability to communicate a need, want, or an emotion such as fear and happiness, makes an enormous difference to a child's life and those around them. For many families, living with autism is incredibly challenging as parents often experience social, financial and vocational disadvantages.

As a not-for-profit organisation, we rely heavily on community and corporate support. The funds raised from the Chain Reaction Women's 300 will be used to alleviate the \$10,000 gap that families experience currently at our Sippy Downs centre. The centre has 16 children enrolled at this time and the autism specific early intervention program will help these children develop vital social, cognitive and communication skills over a two year period. These skills will allow these children to transition successfully to their next learning environment thanks to your support.

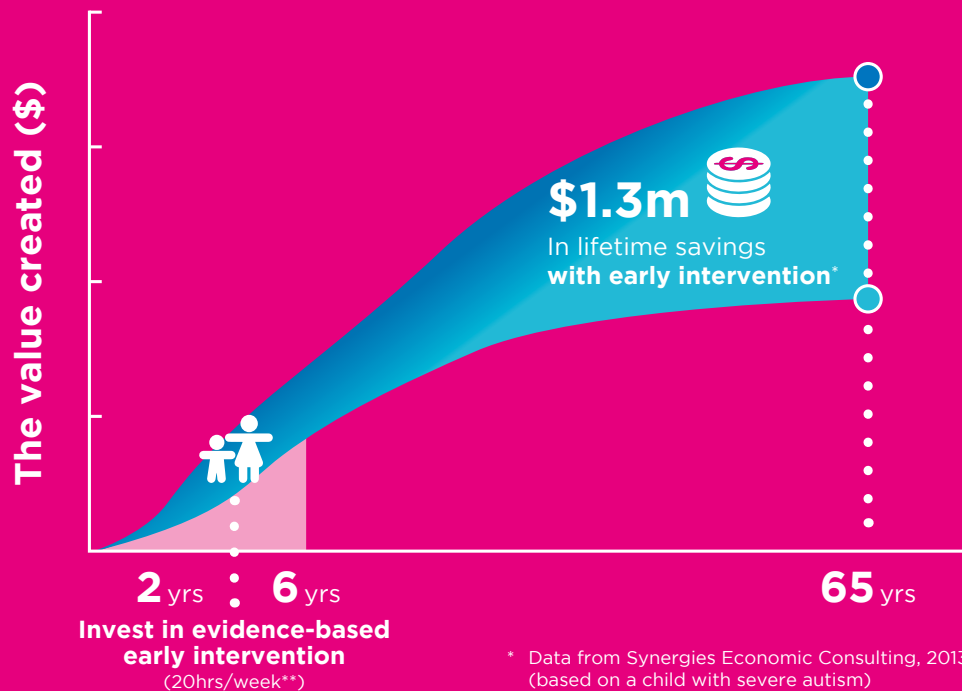
As well as funding the gap for each child, the funds raised will also help purchase vital resources for the Sippy Downs centre to help deliver the early intervention program.

Together, we are completely changing the life trajectory for little children with autism.

See what our families say...



Early intervention: A lifetime investment



Autism costs Australia \$9.7billion a year

in healthcare, social services and education costs, employment and informal care costs and burden of disease (quality of life) costs (Synergies Economic Consulting, 2013)



**Chain Reaction Women's 300
and AEIOU - delivering now and into the future!**

